

EMBRACING INNOVATION

Engineering Excellence





Kimpex was started by a team of leading Industry experts having a collective experience of more than 45 years in the Natural gas industry. The company is Known for offering quality products and trusted practices in the Gas domain. Kimpex is one of the major suppliers in India for PNG & LPG Products.

Whatever your challenges, Kimpex has the technology and services to fulfill your business requirements.

WHY CHOOSE US

We are one of the largest suppliers for Gas metering products, Regulators and Accessories in the Indian market.

- ✓ Combined experience of 45+ years in the Gas industry
- ✓ Qualified & Skilled team of engineers
- ✓ Quick after sales support
- ✓ Ex stock availability of products
- ✓ In house offering of product design and consultancy services



OUR MISSION

To exceed customer expectations with premium quality products.



OUR VISION

To become the most Trusted name in the International gas metering domain.



OUR PRINCIPAL

To always proceed with a Customer-First Approach



OUR PRESENCE

We are present in Asia, Europe, MENA, SAARC, GCC, Australia and expanding.

OUR PRODUCT RANGE

1 DOMESTIC GAS METERS

Designed to meet the requirements of industry standards, & is ideally suited for measuring natural, LPG & biogasses where low domestic gas loads are to be monitored.

2 SMART METERS

The future is smart, and smart meters are part of the effort to create a smart grid, which is part of providing low-carbon, efficient and reliable energy to households.

3 COMMERCIAL GAS METERS

Compact Commercial gas meters are designed to accurately measure volumes of natural gas, LPG & all noncorrosive gases. Several versions & options are available to meet various application requirements.

4 HIGH PRESSURE COMMERCIAL GAS METERS

Commercial gas meters for high flow PNG and LPG applications. These meters are ideal for sub-metering applications in small and medium scale Commercial & Industrial sites.

5 GAS REGULATORS

Gas pressure regulators are used to maintain desired outlet pressure providing the required flow to satisfy a variable downstream demand.

6 INDUSTRIAL GAS METERS

Industrial Gas Flow meters are designed to provide a high order of accuracy & reliability under higher flow and pressure application

7 EVC & DATA LOGGERS

Electronic volume corrector with integrated GSM modem suitable for Zone 0 and can be used with both diaphragm or Industrial Gas Meters

8 ACCESSORIES

As your single source for gas meters and gas regulators, we also offer different types of accessories & fittings you need for your installation.



One of the oldest and top 3 Manufacturer of gas meters in Europe. Apator Metrix deals in the entire range of metering viz. Gas Meters (Mechanical and Smart), Energy Meters, Water Meters, Heat Meters etc. They have been producing gas meters from the last 70 years. They have an installed capacity of more than 2 million meters per year and have meters in the range of G-4 to G-25 Diaphragm Type.

They have a manufacturing facility in the EU and around the world. Their products have been used in the Indian Market with CGD companies like Adani, Gail Gas, Gujarat Gas, MNGL, Sabarmati Gas among others. All their products are approved to the requirement of EN 1359, MID B and MID D from world renowned labs like INIG, NMI and DVGW.



The company specializes in the design and manufacture of Electronic Volume Correctors, & Data Loggers that meet International standards. Headquartered in Poland & with 30 years of experience in the Gas market, PLUM enables cost-effective management of energy consumption by smart metering solutions for each Gas company. Our high production standards are confirmed by the fact that we are one of few Polish industrial electronic manufacturers operating with the Integrated Quality Management System ISO 9001, OHSAS 18001, ISO 14001. Equipment manufactured at PLUM is examined both at the design stage and during production in company's own laboratories. Plus, IoT technology has been key to push PLUM to develop devices able to communicate with different SCADA or Billing systems. We are committed to deliver

the best experience to our partners and gas companies.

EVC MacBat-V





CHINT group was founded in July 1984, which mainly covers new energy, power transmission and distribution equipment, low-voltage electric apparatus, instrument & meter, automation, building electric appliances, high-end equipment, automotive electrical, financial investment and other fields. CHINT has provided safe, reliable and stable solutions for industrial electrical equipment and energy efficiency management systems in 106 countries and regions worldwide. There are more than 30,000 employees around the world. CHINT has always insisted on the operation philosophy of customers, seek development for employees and assume responsibility for the society. With continuous technological innovation, to meet the advancing demand all over the world.

Rooted in China Served in Global World

- 3 Global R&D Center:**
Prague, L.A., Shanghai.
- 6 International marketing areas:**
APAC, West Asia & Africa Region, Europe Region, South America Region, North America Region, China Region.
- 7 Manufacturing bases:**
Wenzhou, Hangzhou, Shanghai, Xianyang, Jiuquan, Cairo, Frankfurt.
- 18 Logistics centers:**
L.A. Sao Paulo, Prague, Madrid, Moscow, East China, Northeast China, North China, Shandong, Southern China, Southwest China, Hubei, Henan, Hunan, Northwest China, Sinkiang, Ganning, Guangxi.
- 17 Marketing Offices**
- 300 Brand flagship stores**



50 years ago, all started in a small mold workshop. over the years, our product portfolio and production capacity have expanded. Ingenuity, hard work and commitment to manufacture reliable products transformed that small workshop into a factory, fully capable of producing any of the components of our product portfolio independently.

We proudly declare that our evolving structure and constant growth led us to be the market leader in Turkey and Internationally recognized brand in global scale.

In India, Eska is having more than 3,00,000 + installations in various gas distribution companies like IGL, Gail, MNGL, Adani, BGL, Gujrat Gas, Megha Engineering, Avantika Gas, TNGCL, Assam Gas, IMC, Green Gas etc.

Here is ESKA's brief history at a glance.

- 1968** Mold Workshop Pneumatic Valves
LPG Regulators
- 1988** Solenoid Valves Solenoid Valve
Coils
- 1990** LPG Conversation Kits For
Automobiles
- 1994** Gas Valves
- 2007** Mechanical Earthquake Valves
- 2010** Double Stage Gas Pressure
Regulators, Single Stage Gas
Pressure Regulators, Gas
Governors, Gas Filters
- 2016** Direct Acting Gas Pressure
Regulators
- 2018** Eska R&D Company Established.
Supported By Turkish Republic
Ministry Of Industry.
- 2019** Launched Solutions Category
Including Cabinets And Stations



Landis+Gyr

For more than 120 years, **Landis+Gyr** has been an industry leader in energy management solutions. Using advanced metering infrastructure and other cutting-edge smart grid technologies, they've helped utility companies all over the globe improve their operations, protect their assets, lower their operating costs and provide better customer service. With a focus on quality, reliability, and innovation Landis+Gyr's portfolio of products and services can help you do the same and modernize your smart

grid for the future.

Since 1896, Landis+Gyr has been a global leader of energy management solutions. They've provided more than 3,500 utility companies all over the world with the broadest portfolio of products and services in the industry.



Metrix Italia is a company specialized in the measurement, control and regulation of gas, the range of products and the technical competence allow it to cover all the needs, from domestic installation to industrial installation with analogue and latest generation smart products. The offer is completed with the remote management of the data transmitted by the devices installed in the field, to the installation, maintenance, repair and original spare parts services.

The management of Metrix Italia has over 30 years of specific technical and commercial experience in the field of gas pressure measurement and regulation.

Metrix Italia produces domestic membrane meters as well as having a cloud computing service for remote management of metering data for gas utilities and private individuals.

Domestic Gas Meter G-1.6

The product is export-oriented steel gas meter designed and manufactured in accordance with EU standard. It has Legal Metrology by Weights & Measurements, India EN 1359, OIML R137, MID B & MID D factory certificates. The key components such as diaphragm, valve are imported from European factories. The gas meter has characteristics of small starting flow rate, wide measurement range, high working pressure, long service life and so on.

Main Function and Characteristic

- ✓ Starting flow rate is less than 3dm³/h
- ✓ Wide measurement range. it can reach accurate measurement among 0.016 to 6m³/h
- ✓ Total pressure loss is less than 160Pa under Max. flow rate 6m³/h; Q_{max}
- ✓ Using a ring riveting of stainless steel to connect the upper and lower casing after glued; the gas meter can bear the leakage test under 75kPa high pressure.
- ✓ Its service life can reach 25 years.
- ✓ Pulse output interface is predefined, in order for providing option for future remote reading.
- ✓ The key components such as diaphragm, sealant, etc are imported from Europe and they have passed the mechanical, chemical and durability test to ensure that the measuring accuracy of gas meter.
- ✓ It can provide the function of preventing reverse flow according to the requirement of customer.
- ✓ Operating temperature range: 20°C~+55°C.

Main Technical Parameters:

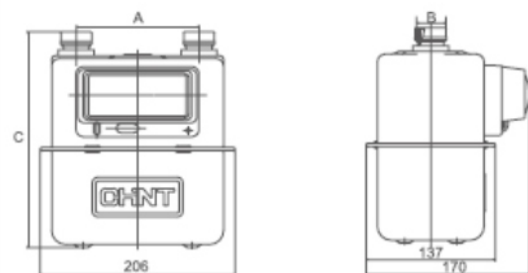
Model	ZT-G1.6S	ZT-G2.5S	ZT-G4S
Nominal flow-rate (q _n) m ³ /h	1.6	2.5	4
Max. flow-rate (q _{max}) m ³ /h	2.5	4	6
Min. flow-rate (q _{min}) m ³ /h	0.016	0.025	0.04
Operating pressure range kPa	0.5 ~ 50		
Max. Permissible $q_k \leq q \leq q_{max}$	±1.5%		
Error $q_{min} \leq q < q_k$	±3%		
Total pressure loss Pa	≤160		
Max. reading m ³	99999.999		
Min. reading m ³	0.0002		
Cyclic volume dm ³	1.2		
Weight kg	2		
Standard	OIML R137:2006 EN1359:1998/A1:2006		

CHNT

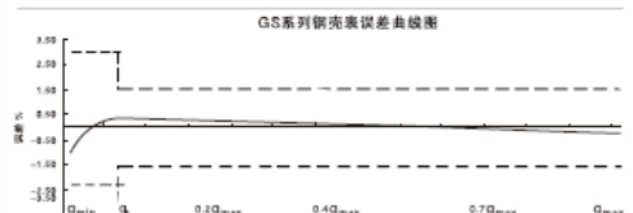


Appearance and Installation Size

A	90±0.50	110±0.50	30±0.50	
B	M26x1.5-6g	M30 x 2-6g	¾B G1B	G1¼B
C		228		226



GS series(Steel) error curve



Smart AMR Gas Meter

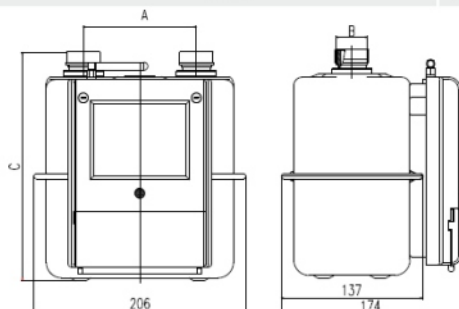
Based on our company's ZGS series common meters, this type of wireless remote gas meter is the one which has function of wireless data remote transmission and remote control after installing wireless transceiver control module. The purchased gas can be stored in the meter through wireless transmission, meanwhile, the gas information and meter status can be reported to reading management system

Main Function and Characteristic

- ✓ Data remote transmission through LORA technology (frequency 470MHz~510MHz)
- ✓ Remote recharge through remote method
- ✓ Remote reading, remote control and remote price adjusting can be done through both HHU and concentrator
- ✓ With pre-purchased gas amount and unit price, and counted by amount
- ✓ Remote reading, remote control and remote price adjusting can be done through both HHU and concentrator
- ✓ Seamless link can be done between meter and concentrator (RS 232 or GPRS) using HHU
- ✓ With function of automatically reporting fault information
- ✓ Ultra-low power consumption with average static working current less than 20 μ A
- ✓ Accurate measurement, using double pulse
- ✓ Anti-theft, automatic detection of external magnetic interference
- ✓ Good sealing with protection class IP 65
- ✓ 5 level ladder method is supported. Different prices can be valued for different use by setting settlement cycle (such as 1 month).

Appearance and Installation Size

A	90 \pm 0.50	110 \pm 0.50	30 \pm 0.50	
B	M26x1.5-6g	M30 x 2-6g	¾B G1B	G1¼B
C		228		226



CHNT



Main Technical Parameters:

Model	ZG1.6S-62	ZG2.5S-62	ZG4S-62
Nominal flow-rate (qn) m³/h	1.6	2.5	4
Max. flow-rate (qmax) m³/h	2.5	4	6
Min. flow-rate (qmin) m³/h	0.016	0.025	0.04
Operating pressure range kPa	0.5 ~ 50		
Max. Permissible $q_t \leq q \leq q_{max}$	$\pm 1.5\%$		
Error $q_{min} \leq q < q_t$	$\pm 3\%$		
Total pressure loss Pa	≤ 160		
Max. reading m³	99999.999		
Min. reading m³	0.0002		
Cyclic volume dm³	1.2		
Working voltage V	DC6V 4pcs double A battery		
Static working current μ A	≤ 20		
Carrier frequency MHz	470~510		
Transmitting power mW	≤ 50		
Communication speed bps	9600		
Communication distance m	Open field > 3000m Inside building 30~300 mm		
Working way	Half-duplex		
Receiving sensitivity dBm	-120		

Smart Prepaid+ AMR Gas Meter

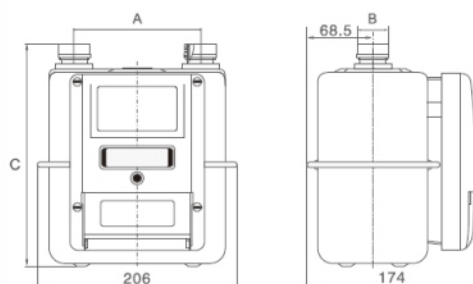
Based on our company's common meters, this type of wireless remote gas meter has function of wireless data remote transmission and remote control after installing wireless transceiver control module and IC card reading module. The purchased gas can be stored in the meter through wireless transmission and IC card input, meanwhile, the gas information and meter status can be reported to reading management system.

Main Function and Characteristic

- ✓ Data remote transmission through LORA technology (frequency 470MHz~510MHz)
- ✓ Can be through the IC card or wireless remote way to achieve pre-payment function
- ✓ Structure and beautiful appearance, using special designed builtin helical antenna
- ✓ With pre-purchased gas amount and unit price, and counted by amount
- ✓ Remote reading, remote control and remote price adjusting can be done through both HHU and concentrator
- ✓ Seamless link can be done between meter and reading system using HHU
- ✓ With function of automatically reporting fault information
- ✓ Ultra-low power consumption with average static working current less than 20 μ A
- ✓ Accurate measurement, using double pulse
- ✓ Anti-theft, automatic detection of external magnetic interference
- ✓ Good sealing with protection class IP 65
- ✓ 5 level ladder method is supported
- ✓ Different prices can be valued for different use by setting settlement cycle (such as 1 month)

Appearance and Installation Size

A	90 \pm 0.50	110 \pm 0.50	130 \pm 0.50	
B	M26x1.5-6g	M30 x 2-6g	3/4B G1B	G1 1/4B
C		228		226



CHNT



Main Technical Parameters:

Model	ZG1.6S-62	ZG2.5S-62	ZG4S-62
Nominal flow-rate (qn) m³/h	1.6	2.5	4
Max. flow-rate (qmax) m³/h	2.5	4	6
Min. flow-rate (qmin) m³/h	0.016	0.025	0.04
Operating pressure range kPa	0.5 ~ 50		
Max. Permissible $q_t \leq q \leq q_{t,ax}$	$\pm 1.5\%$		
Error $q_{t,n} \leq q < q_t$	$\pm 3\%$		
Total pressure loss Pa	≤ 160		
Max. reading m³	99999.999		
Min. reading m³	0.0002		
Cyclic volume dm³	1.2		
Working voltage V	DC6V 4pcs #5 Alkaline battery		
Counting sampling method	Reed Switch or Hall Double Pulse		
Pulse equivalency M³/Pulse	0.1 or 0.01		
Static working current μ A	≤ 20		
Carrier frequency MHZ	470~510		
Transmitting power mW	≤ 50		
Communication speed bps	9600		
Communication distance m	Open field > 3000m Inside building 30~300 mm		
Working way	Half-duplex		
Receiving sensitivity dBm	-120		

Commercial Gas Meters

Apator's UG series gas meters are designed for measurement of gas supplied to commercial and industrial establishments where the consumption of gas ranges from 6 m³/hr to 40 m³/hr.

Commercial Diaphragm Type Gas Meters include:

- ✓ G-4
- ✓ G-6
- ✓ G-10
- ✓ G-16
- ✓ G-25

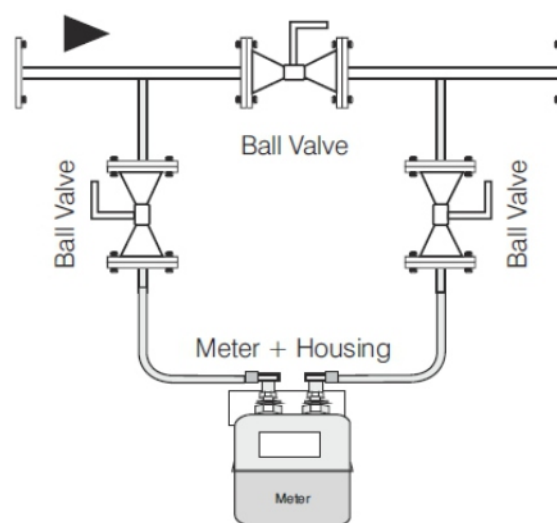
Approvals:

- ✓ Indian Legal Metrology
- ✓ EN 1359
- ✓ MIDB
- ✓ MIDD

The gas meters can be used for measurement of:

- ✓ Natural gas
- ✓ City gas
- ✓ Propane-butane gas

Gas meter is equipped with pulse magnet as standard. Pulse transmitter can be added at any time (1 imp = 0,01 m³).



Technical Specifications:

Model		G-6	G-10	G-16	G-25
Maximum flow rate	M ³ /h	10	16	25	40
Minimum flow rate	M ³ /h	0.06	0.1	0.16	0.25
Nominal flow rate	M ³ /h	6	10	15	25
Cyclic Volume	dm ³	2.2	5.6	5.6	11.2
Max Working Pressure	bar	0.5	0.5	0.5	0.5
Index max Indication		99999.999	999999.99	999999.99	999999.99



High Pressure Gas Meter G-4

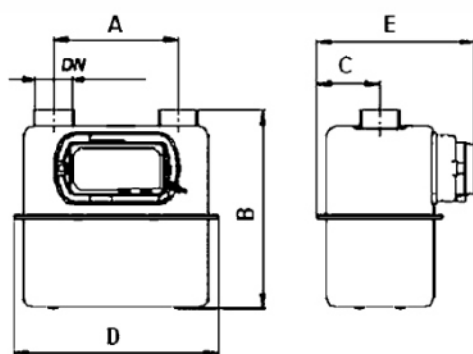
The new UG 4 represent latest generation of residential gas meter. Designed for long time accuracy performance and coming from a know-how of over 60 years producing gas meters, the new UG 4 AL is mainly dedicated for small capacities and LPG applications. A very wide range of solutions is available from traditional meter to smart meter with digital counter; available with built-in on-off valve, mechanical temperature compensation and remote reading retrofit solutions, UG 4 series can offer different and flexible solutions for every local market needs.

Main Function and Characteristic

- ✓ Very compact design
- ✓ Long time high accuracy (up to 15 years)
- ✓ Special version for LPG (butane-propane)
- ✓ LPG version with Q.start 0,006 m³/h
- ✓ Working pressure up to 2 bar (alu body)
- ✓ Tested up to 3 bar (aluminium)
- ✓ CE-MID approved and marked
- ✓ Slot for retrofittable LF pulse transmitter
- ✓ Retrofittable telereading module (by radio frequency or gsm/gprs system)

Maximum Protection Against Fraud And Tampering

- ✓ Patented tamper-proof counter
- ✓ Safety anti back-flow system
- ✓ Magnetic transmission (avoid leakage)



metrixitalia



Main Technical Parameters:

Model	G4	
Max. flow-rate (qmax)	m³/h	Q _{max} 6
Min. flow-rate (qmin)	m³/h	Q _{min} 0.04 (option 0.016)
Temperature range	°C	-25°C ~ +55°C
Cyclic volume	dm³	1.2
Max. working Pressure	bar	2
Index max. reading	m³/h	99999.999
Starting flow rate	m³/h	0.006
Approvals	CE-MID : EN 1359, Legal Metrology	

Model	Case	V Cyclic	Connection	Flow m³/h		Weight	Dimensions (mm)				
		dm³		Q _{min}	Q _{max}		A	B	C	D	E
G4	Alluminium	1.2	1 ¼" gas	0.04 (option 0.016)	6	1.7	110	205	70	200	161

LANDIS+GYR G-6

Designed for long life and superior performance. Housed in a compact aluminum case, the Model G-6 is a slow revving high capacity gas meter. Its 2 liter per cycle diaphragm operates at a rate 60% slower than its 1.2 liter rivals. This design minimizes the speed of internal components thereby reducing wear and ensuring long term accuracy retention. The G-6 Model has a capacity of 10 m³/h. The outstanding design features of the gas meter such as its tangent control, large cyclic capacity and magnetic drive index provide unparalleled accuracy. The G-6 Model has a low pressure absorption due to the tangent assembly, sliding low friction valves, and large cyclic capacity (2 dm³/cycle), which ensures extended field life and long term accuracy retention.

The initial accuracy of a meter is easy to achieve by using calibration to pass initial testing. However, sustained accuracy over time comes down to the quality, design and construction of the meter. The meter has been designed for long-term stability and extended field life.



Main Technical Parameters:

Model		G6	G10
Max. flow-rate (q _{max})	m ³ /h	10	10
Min. flow-rate (q _{min})	m ³ /h	0.1	0.14
Weight	kg	2.7	2.75
Max. working Pressure	bar	1.5	1.5
Index max. reading	m ³ /h	99999.999	99999.999
Size	inch	1" CBS 746	1" CBS 746

Landis+Gyr

LANDIS+GYR G10

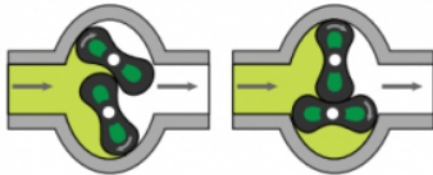
The G-10 Model gas meter is designed for large domestic or light commercial applications. Utilising a compact module, the G-10 provides a designed capacity of 14 m³/h. The meter is designed for extreme weather conditions having a fully sealed hydrophilic coated UV stabilised index, die cast aluminium housing, which is Alodine surface pre-treated followed by baked Woodland Grey polyester powder coat. The meters inlet / outlet bosses and external dimensions are identical to that of the G-6 Model. While delivering an increased flow channel performance, the G-10 Model meter weighs just 100 grams more than the G-6. This allows domestic gas services to be upgraded to a higher flow capacity without the need to alter the pipe-work at the meter, saving time and money.

The outstanding design features of the gas meter such as the tangent control, large cyclic capacity and magnetic drive index provide unparalleled accuracy. The G-10 Model has been designed for long-term use.



High Pressure Mini RPD G-6

LRZ Miniature RPD Gas Flowmeter are small capacity Flowmeter with proven rotary piston design and high accuracy. They are suitable for Natural Gas, LPG and other nonaggressive gases. These meters have Aluminium housing and rotors with stainless steel bearings. Maximum operating pressure is 1.0 Bar (Standard) and 3.0 Bar (Optional), with 3/4" BSP (M) end connections. The counter is 5 + 3 Digits which is Nonresettable. LRZ Miniature RPD Gas Meters are ideal for Gas / LPG distribution and burner consumption measurement.



Main Technical Parameters:

Model	Miniature RPD G6	
Max. flow-rate (qmax)	m ³ /h	Q _{max} 10
Min. flow-rate (qmin)	m ³ /h	Q _{min} 0.08
Temperature range	°C	-25°C ~ +55°C
Max. working Pressure	bar	3
Index max. reading	m ³ /h	99999.999
Nominal flow rate	m ³ /h	6



DOUBLE STAGE GAS PRESSURE REGULATOR

Pressure Class
PN4 and PN6

Inlet Connection or Port Size
½", ¾", 1", 1 ¼" Threaded (Female)

Outlet Connection or Port Size
½", ¾", 1", 1 ¼", 1 ½", 2" Threaded (Female)

Inlet Pressure Range
0,1bar up to 6bar

Outlet Pressure Range
18 mbar up to 500 mbar

Flow Range
1,6 to 65 m³/h

Structural Additional Features
with UPSQ, with Relief Valve



DOUBLE STAGE GAS PRESSURE REGULATOR WITH OPSQ

Pressure Class
PN4 and PN6

Inlet Connection or Port Size
½", ¾", 1", 1 ¼" Threaded (Female)

Outlet Connection or Port Size
½", ¾", 1", 1 ¼", 1 ½", 2" Threaded (Female)

Inlet Pressure Range
0,1bar up to 6bar

Outlet Pressure Range
18 mbar up to 500 mbar

Flow Range
1,6 to 65 m³/h

Structural Additional Features
with UPSQ, with OPSQ, with Relief Valve



DOUBLE STAGE GAS PRESSURE REGULATOR

Pressure Class
PN4 and PN6

Inlet Connection or Port Size
1" Threaded (Female)

Outlet Connection or Port Size
1 ½" Threaded (Female)

Inlet Pressure Range
0,5bar up to 6bar

Outlet Pressure Range
15 mbar up to 360 mbar

Flow Range
50-75-100 m³/h

Structural Additional Features
with UPSQ, with OPSQ, with Relief Valve



PN20 DIRECT ACTING REGULATOR

Pressure Class
PN20

Connection or Port Size
DN25xDN25, DN25xDN40

Inlet Pressure Range
1 to 20 bar

Outlet Pressure Range
100 mbar up to 4bar

Flow Range
up to 250 m³/h

Structural Additional Features
with UPSQ, with OPSQ, with Relief Valve



PN20 DIRECT ACTING REGULATOR

Pressure Class
PN20

Connection or Port Size
1"x 1" and, 1" x 1 ½"

Inlet Pressure Range
1 to 20 bar

Outlet Pressure Range
15 mbar to 2,5 bar

Flow Range
up to 500 m³/h

Structural Additional Features
with UPSQ, with OPSQ, with Relief Valve



PN20 DIRECT ACTING REGULATOR

Pressure Class
PN20

Connection or Port Size
2"x 2" and 1 ½" x 1 ½"

Inlet Pressure Range
1 to 20 bar

Outlet Pressure Range
15 mbar to 4 bar

Flow Range
up to 5000 m³/h

Structural Additional Features
with UPSQ, with OPSQ, with Relief Valve
Monitor version available



SINGLE STAGE GAS PRESSURE REGULATOR

Pressure Class
PN1

Connection or Port Size
½" up to 2" Threaded (Female)

Inlet Pressure Range
50 mbar to 1 bar

Outlet Pressure Range
16 mbar up to 150 mbar

Flow Range
20-120 m³/h



SINGLE STAGE GAS PRESSURE REGULATOR WITH SHUT OFF

Pressure Class
PN1

Connection or Port Size
½" up to 2" Threaded (Female)

Inlet Pressure Range
50 mbar to 1 bar

Outlet Pressure Range
16 mbar up to 150 mbar

Flow Range
20-120 m³/h

Structural Additional Features
with UPSQ, with OPSQ, with Relief Valve



SINGLE STAGE GAS PRESSURE REGULATOR WITH SHUT OFF

Pressure Class
PN5

Connection or Port Size
¾" up to 2" Threaded (Female), Flanged

Inlet Pressure Range
500 mbar to 5 bar

Outlet Pressure Range
Up to 500 mbar

Flow Range
Up to 1000 m³/h

Structural Additional Features
with UPSO, with OPSO, with Relief Valve



MECHANICAL ACTUATED SEISMIC VALVE

Pressure Class
PN0,5

Connection or Port Size
1", 1 ¼", 1 ½", 2" Threaded (Female) and DN65, DN80, DN100 Flanged

Position
Normally Open

Reset
Manually



GAS FILTER

Pressure Class
PN1

Connection
½" up to 2" Threaded (Female) and DN65, DN80, DN100 Flanged



GAS FILTER

Pressure Class
PN6

Connection
½" up to 2"



MANUAL RESET GAS VALVE

Pressure Class
PN0,5

Connection or Port Size
½" up to 2" Threaded (Female) and DN65, DN80, DN100 Flanged

Position or Switching Function
Normally Open

Reset
Manually



NATURAL GAS-LPG GAS ALARM DEVICE

Usage
Home, Office etc

Detects Gases
Methane (natural Gas), LPG (Liquefied Petroleum Gas)

Device Type
Type A (visual alarm, audible alarm and output signal)

Operating Voltage
230 V AC 50-60 Hz, +-10%

Output Signal (relay contact)
230V AC/7A (normally open)

EVC MacBAT-V



MacBAT 5 is a gas volume corrector that enables PTZ, PT or T conversion. The device is designed to measure volume, energy and flow of gas. Primarily battery powered with the possibility to connect external power supply. The device converts the volume of gas counted by the gas meter (turbine, rotary, ultrasonic) into the base conditions.

Gas compressibility factor is calculated with the use of algorithms SGERG-88, MGERG-88, AGA8-92DC, AGA8-G1, AGA8-G2, AGA NX-19 mod or constant value of relative compression factor. MacBAT 5 is an intrinsically safe device ready to be installed in explosive hazardous zone 0.

Main Function and Characteristic

- ✓ Industrial housing cooperates with various types of gas meter like turbine, rotary, ultrasonic directly by LF, HF, Namur, Encoder, Wiegand
- ✓ 4 independent serial transmission ports (2xRS485 + OPTICAL INTERFACE 62056-21+ NFC IEC 14443)
- ✓ Built-in GSM/GPRS modem (option)
- ✓ Backlight graphic display
- ✓ 5 configurable binary Ex inputs
- ✓ 2 configurable binary NAMUR Ex inputs (operating on battery mode)
- ✓ Binary and frequency outputs
- ✓ Internal or external pressure transducers available
- ✓ More than 10 years of archive registered data storage (with monthly sampling interval)



Full Telemetry Set

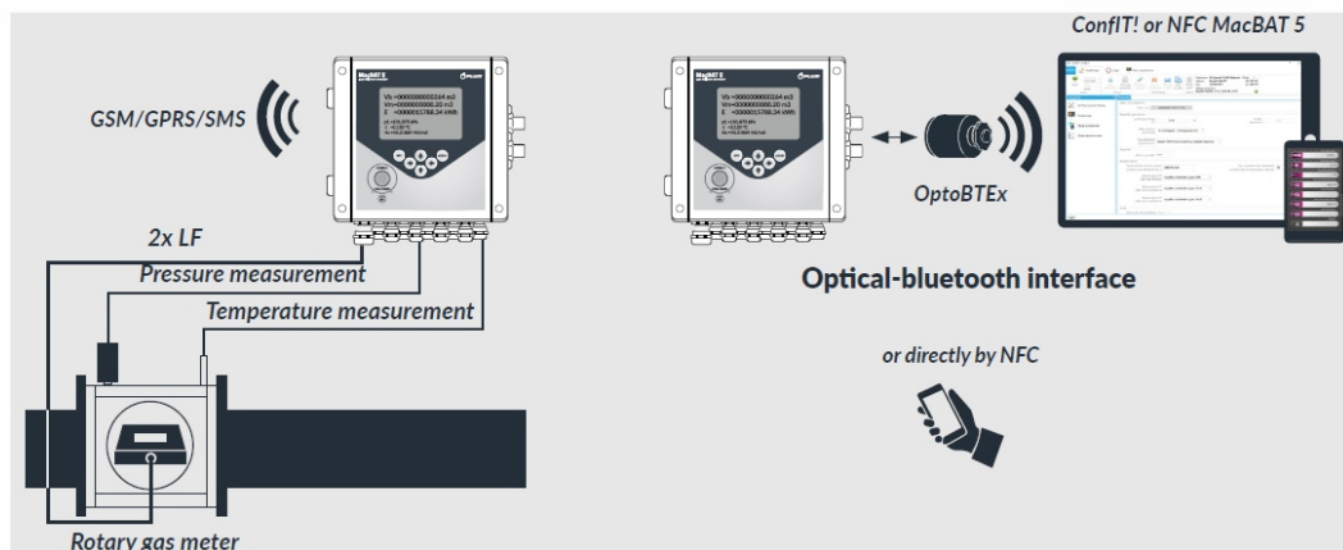
One device acting as a full telemetry set ready to work after simple configuration.

Bar Graph

Configurable bar graphs displaying chosen registered parameter in defined period of time on main screen.

Comprehensive Solution

Comprehensive solution for various type of gas meters due to pulse inputs variety.



AMR/DATA LOGGER - MacR6



MacR6 is advanced, battery powered gas flow DataLogger addressed to gas network administrators. Safe, compact housing, universal connector offers compatibility of MacR6 DataLogger with all types of gas meters, highly effective TCP protocol, innovatory and intuitive mounting system are the main advantages of the MacR6 DataLogger.

Main Function and Characteristic

- ✓ TCP protocol allows transmission of data packets much larger compared to the traditional SMS protocol
- ✓ The open form of TCP protocol and GAZ-MODEM2 protocol allows operation with many types of IT solutions
- ✓ Electronic sensor monitors operation of the gas meter
- ✓ Universal adapter offers compatibility of MacR6 with gas meters like Elster (Kromschroder), Metrix
- ✓ Pulse input for potential-free connection of any gas meter or volume corrector's pulse transmitter
- ✓ Prepared for energy indication in kWh
- ✓ Available configuration tools for Android smartphones and tablets with geolocation function
- ✓ Powered by replaceable batteries
- ✓ User-friendly Interface
- ✓ Fast, secure, intuitive device installation



Full Telemetry Set

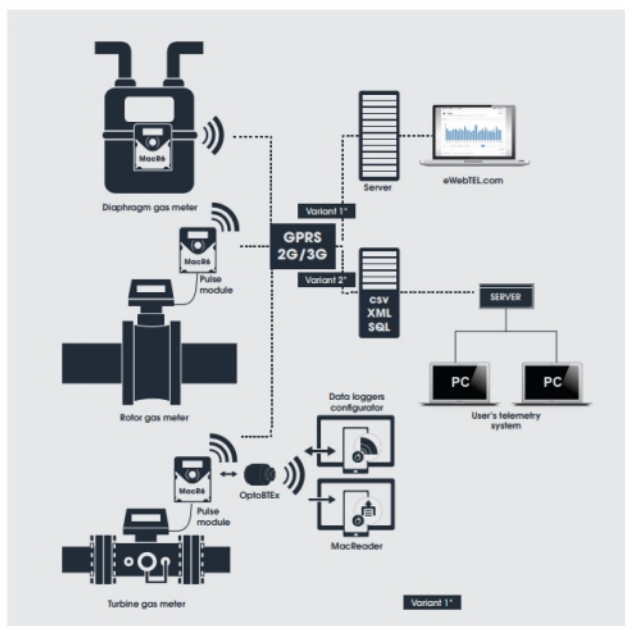
Quick and simple configuration using Android application.

Alarm Monitoring

Immediate report sending in alarm situations.

High accuracy

SCADA system ready.



Accessories



Ball Valves

We supply Brass ball valves in Lever & butterfly handle which are as per EN 331 standard. Size available: 1/2"-2" in a Chrome finish. Thread available: BSP, NPT, BSPT.



Appliance Valve

As the name suggests these are used near the Gas appliance/stoves in the Kitchen area. Nozzle end is connected to the Suraksha hose through which the Gas supply reaches the appliance. It act as a switch for controlling the flow of Gas.



Leak Detectors

A gas detector is a device that detects the presence of gases in an area, often as part of a safety system. This type of equipment is used to detect a gas leak or other emissions and can interface with a control system so a process can be automatically shut down. A gas detector can sound an alarm to operators in the area where the leak is occurring, giving them the opportunity to leave. We supply CE approved leak detectors for domestic & commercial applications.



Flexible Hoses (SS)

We supply precision-engineered water hoses & gas hoses that are known for their superior functional value, utility, performance and durability. All our flexible hoses, stainless steel hoses, gas hoses, etc. are checked and tested inhouse as per the specifications.



Brass Fittings

Supplied along with Gas meters as coupling / fittings.



Solenoid Valve

A solenoid valve is an electromechanical device in which the solenoid uses an electric current to generate a magnetic field and thereby operate a mechanism which regulates the opening of fluid flow in a valve. We supply CE approved Solenoid valves. Range 1/2" - 2" size.

Our Valued Customers



Sabarmati Gas Ltd.
(A Joint Venture of GSPC and BPCL)



SHOLAGASCO
An IMC Group Company



Bhagyanagar Gas Limited



Our Valued Consultants



Our Global Presence



Our Tie-ups





KRITI TRADEIMPEX PVT. LTD.

4th floor Rectangle No.1, Behind Marriott Hotel Saket,
Commercial Complex D4 Saket, New Delhi – 110017
Email: info@kimpexflow.com | Phone: +91 11 4019 8986